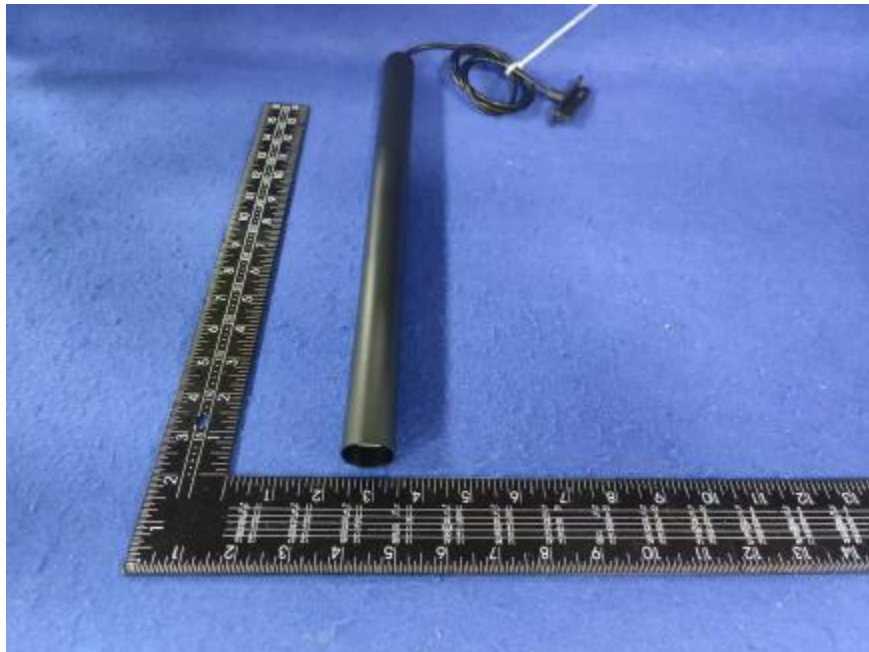


Luminaire Photograph



Light Output Ratio:	77.5%	
Luminaire Power:	6.432 W	
SHR Nominal:	0.75	Calculated using the TM5
SHR Maximum:	0.85	fine grid method.

C Range: 0 - 360DEG
C Interval: 30.0DEG
Test Speed: HIGH
Temperature: 25.3 °C
Operators: zoe
Test Date: 2024-12-18

γ Range: 0 - 180DEG
 γ Interval: 1.0DEG
Test System: EVERFINE GO-SPEX500_V1 SYSTEM V2.00.461
Humidity: 65.0%
Test Distance: 3.160m [K=1.0000]
Remarks: LAMP: BXRH-30G60T0-C-83 Ra: 90
LENS: PM-1117C 50R
NOT DRIVER: DC 48V
30minutes warm-up

LUMINOUS INTENSITY DISTRIBUTION DIAGRAM

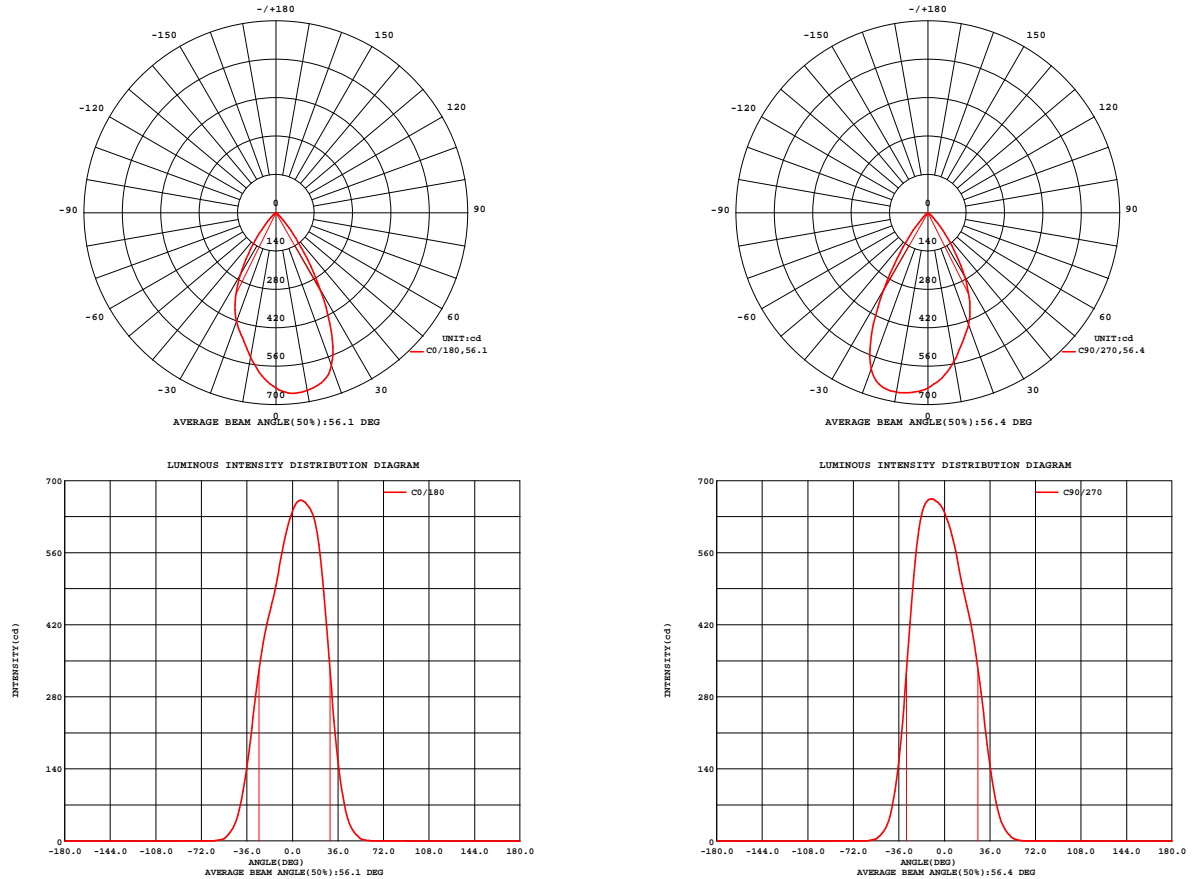


Fig. C0/C180

Fig. C90/C270

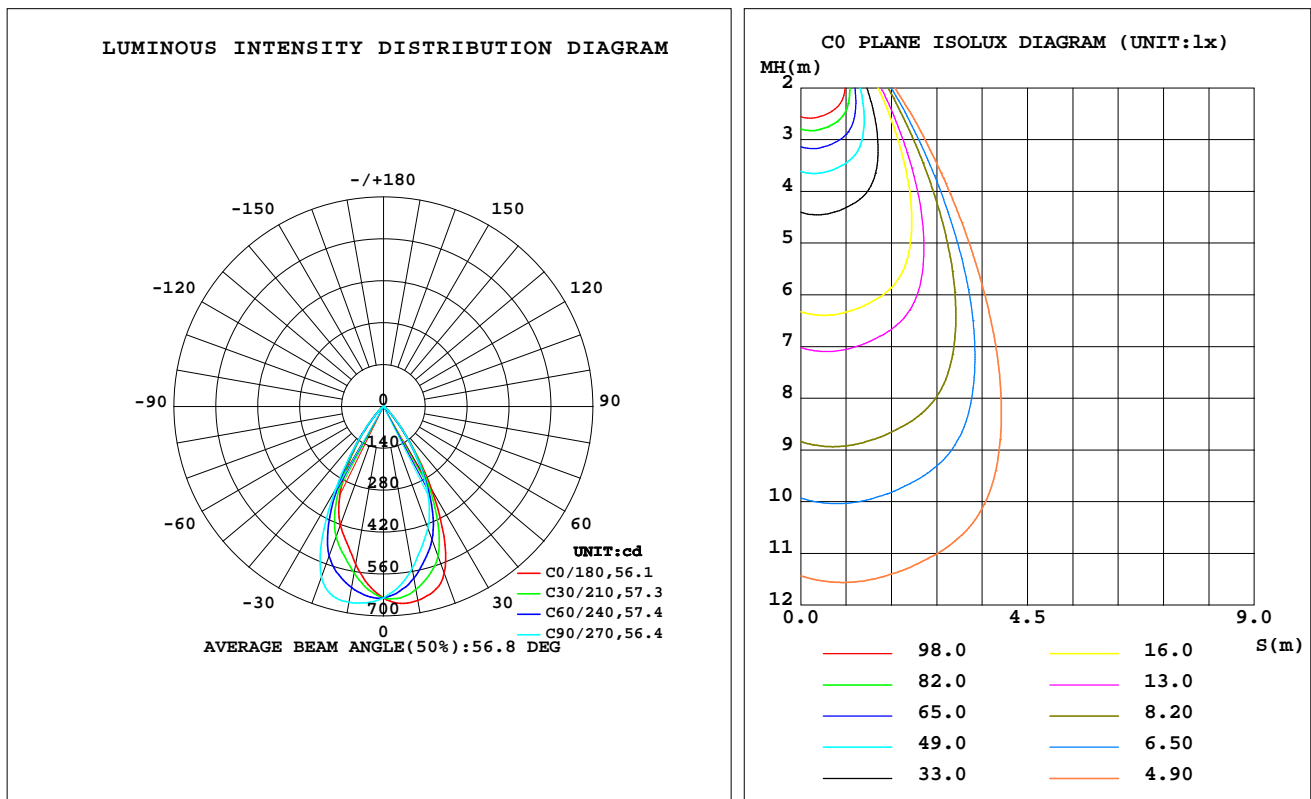
C Range: 0 - 360DEG
C Interval: 30.0DEG
Test Speed: HIGH
Temperature:25.3℃
Operators:zoe
Test Date:2024-12-18

γ Range: 0 - 180DEG
γ Interval: 1.0DEG
Test System:EVERFINE GO-SPEX500_V1 SYSTEM V2.00.461
Humidity:65.0%
Test Distance:3.160m [K=1.0000]
Remarks: LAMP:BXRH-30G60T0-C-83 Ra:90
LENS:PM-1117C 50R
NOT DRIVER:DC 48V
30minutes warm-up

LUMINAIRE PHOTOMETRIC TEST REPORT

Test:U:47.997V I:0.1340A P:6.4316W PF:1.0000 Freq:49.99Hz Lamp Flux:712.09x1 lm		
NAME: OZ48-CT-28	TYPE:	WEIGHT:
SPEC.: 3000K	DIM.:	SERIAL No.: 2412181480
MFR.: RISE	SUR.: 0.000346185m2	Shielding Angle:

DATA OF LAMP		PHOTOMETRIC DATA Eff: 85.86 lm/W			
MODEL	Bridgelux	Imax(cd)	706.2	S/MH(C0/180)	0.80
NOMINAL POWER(W)	6	LOR(%)	77.5	S/MH(C90/270)	0.88
RATED VOLTAGE(V)	48	TOTAL FLUX(lm)	552.20	η UP,DN(C0-180)	0.0,36.8
NOMINAL FLUX(lm)	712.09	CIE CLASS	DIRECT	η UP,DN(C180-360)	0.0,40.8
LAMPS INSIDE	1	η up(%)	0.0	CIBSE SHR NOM	0.75
TEST VOLTAGE(V)	48	η down(%)	77.5	CIBSE SHR MAX	0.85



C Range: 0 - 360DEG
C Interval: 30.0DEG
Test Speed: HIGH
Temperature:25.3℃
Operators:zoe
Test Date:2024-12-18

γ Range: 0 - 180DEG
 γ Interval: 1.0DEG
Test System:EVERFINE GO-SPEX500_V1 SYSTEM V2.00.461
Humidity:65.0%
Test Distance:3.160m [K=1.0000]
Remarks: LAMP:BXRH-30G60T0-C-83 Ra:90
LENS:PM-1117C 50R
NOT DRIVER:DC 48V
30minutes warm-up

ZONAL FLUX DIAGRAM

ZONAL FLUX DIAGRAM:

γ	C0	C45	C90	C135	C180	C225	C270	C315	γ	Φ zone	Φ total	%lum,lamp
10	658.2	602.1	550.1	526.4	535.7	590.5	664.3	693.1	0- 10	59.22	59.22	10.7,8.32
20	593.4	503.7	433.6	407.4	422.6	497.6	606.4	661.9	10- 20	158.6	217.8	39.4,30.6
30	324.1	288.3	269.0	252.4	259.9	289.4	323.5	356.0	20- 30	189.7	407.6	73.8,57.2
40	87.70	87.29	87.59	82.83	83.03	83.29	83.55	87.73	30- 40	109.6	517.2	93.7,72.6
50	13.50	15.02	15.40	14.59	13.76	12.53	12.31	12.87	40- 50	30.25	547.4	99.1,76.9
60	0.9168	1.075	1.142	1.055	0.9364	0.8589	0.8202	0.8515	50- 60	4.419	551.8	99.9,77.5
70	0.0948	0.0995	0.1125	0.1129	0.1098	0.1015	0.0986	0.0914	60- 70	0.2926	552.1	100,77.5
80	0.0211	0.0191	0.0269	0.0277	0.0283	0.0248	0.0270	0.0188	70- 80	0.0575	552.2	100,77.5
90	0	0	0	0	0	0	0	0	80- 90	0.0130	552.2	100,77.5
100	0	0	0	0	0	0	0	0	90-100	0	552.2	100,77.5
110	0	0	0	0	0	0	0	0	100-110	0	552.2	100,77.5
120	0	0	0	0	0	0	0	0	110-120	0	552.2	100,77.5
130	0	0	0	0	0	0	0	0	120-130	0	552.2	100,77.5
140	0	0	0	0	0	0	0	0	130-140	0	552.2	100,77.5
150	0	0	0	0	0	0	0	0	140-150	0	552.2	100,77.5
160	0	0	0	0	0	0	0	0	150-160	0	552.2	100,77.5
170	0	0	0	0	0	0	0	0	160-170	0	552.2	100,77.5
180	0	0	0	0	0	0	0	0	170-180	0	552.2	100,77.5
DEG	LUMINOUS INTENSITY:cd									UNIT:lm		

C Range: 0 - 360DEG
C Interval: 30.0DEG
Test Speed: HIGH
Temperature:25.3℃
Operators:zoe
Test Date:2024-12-18

γ Range: 0 - 180DEG
 γ Interval: 1.0DEG
Test System:EVERFINE GO-SPEX500_V1 SYSTEM V2.00.461
Humidity:65.0%
Test Distance:3.160m [K=1.0000]
Remarks: LAMP:BXRH-30G60T0-C-83 Ra:90
LENS:PM-1117C 50R
NOT DRIVER:DC 48V
30minutes warm-up

LUMINANCE LIMITATION CURVES

Test:U:47.997V I:0.1340A P:6.4316W PF:1.0000 Freq:49.99Hz
Lamp Flux:712.09x1 lm

NAME: OZ48-CT-28

TYPE:

WEIGHT:

SPEC.: 3000K

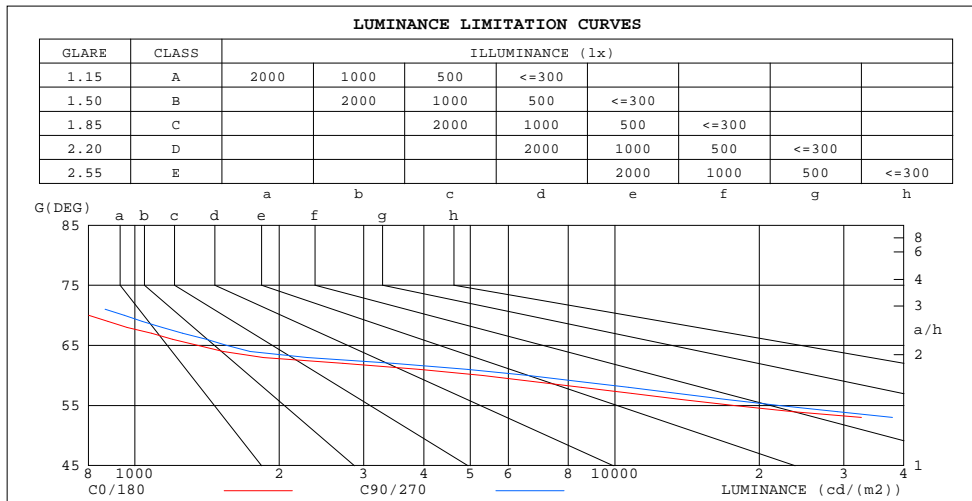
DIM.:

SERIAL No.: 2412181480

MFR.: RISE

SUR.: 0.000346185m2

Shielding Angle:



LUMINANCE cd/(m2)		
G(DEG)	C0/180	C90/270
85	392	472
80	352	448
75	497	639
70	802	951
65	1353	1555
60	5306	6609
55	17757	22049
50	60761	69286
45	142262	154242

C Range: 0 - 360DEG
C Interval: 30.0DEG
Test Speed: HIGH
Temperature:25.3℃
Operators:zoe
Test Date:2024-12-18

γ Range: 0 - 180DEG
γ Interval: 1.0DEG
Test System:EVERFINE GO-SPEX500_V1 SYSTEM V2.00.461
Humidity:65.0%
Test Distance:3.160m [K=1.0000]
Remarks: LAMP:BXRH-30G60T0-C-83 Ra:90
LENS:PM-1117C 50R
NOT DRIVER:DC 48V
30minutes warm-up

CU AND LUMINAIRE BUDGETARY ESTIMATE DIAGRAM

Test:U:47.997V I:0.1340A P:6.4316W PF:1.0000 Freq:49.99Hz
Lamp Flux:712.09x1 lm

NAME: OZ48-CT-28

TYPE:

WEIGHT:

SPEC.: 3000K

DIM.:

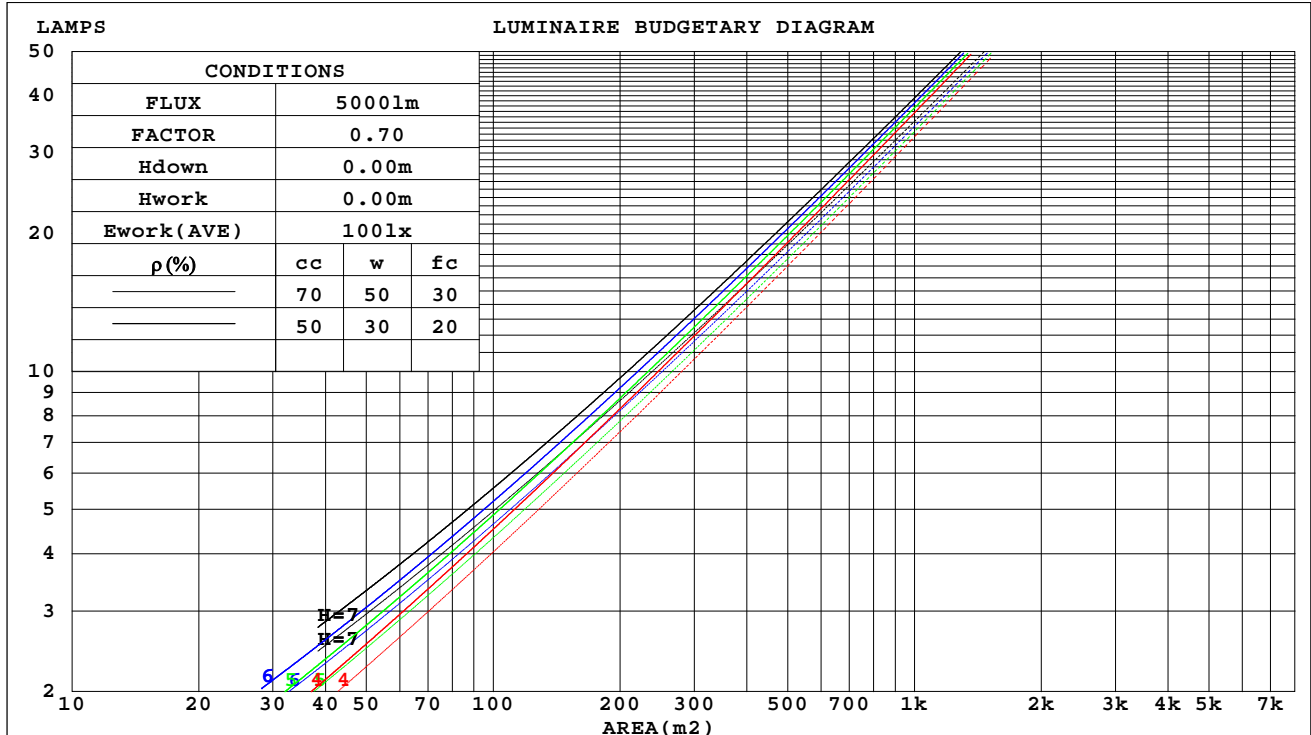
SERIAL No.: 2412181480

MFR.: RISE

SUR.: 0.000346185m2

Shielding Angle:

ρ_{cc}	80%			70%			50%			30%			10%			0
ρ_w	50%	30%	10%	50%	30%	10%	50%	30%	10%	50%	30%	10%	50%	30%	10%	0
ρ_{fc}	20%			20%			20%			20%			20%			0
RCR	RCR:Room Cavity Ratio															



C Range: 0 - 360DEG
C Interval: 30.0DEG
Test Speed: HIGH
Temperature:25.3℃
Operators:zoe
Test Date:2024-12-18

γ Range: 0 - 180DEG
 γ Interval: 1.0DEG
Test System:EVERFINE GO-SPEX500_V1 SYSTEM V2.00.461
Humidity:65.0%
Test Distance:3.160m [K=1.0000]
Remarks: LAMP:BXRH-30G60T0-C-83 Ra:90
LENS:PM-1117C 50R
NOT DRIVER:DC 48V
30minutes warm-up



WEC AND CCEC

Test:U:47.997V I:0.1340A P:6.4316W PF:1.0000 Freq:49.99Hz Lamp Flux:712.09x1 lm		
NAME: OZ48-CT-28	TYPE:	WEIGHT:
SPEC.: 3000K	DIM.:	SERIAL No.: 2412181480
MFR.: RISE	SUR.: 0.000346185m2	Shielding Angle:

pcc	80%			70%			50%			30%			10%			0
pw	50%	30%	10%	50%	30%	10%	50%	30%	10%	50%	30%	10%	50%	30%	10%	0
pfc	20%			20%			20%			20%			20%			0
RCR	RCR:Room Cavity Ratio						Wall Exitance Coefficients(WEC)									
0.0																
1.0	.135	.077	.024	.130	.074	.024	.120	.069	.022	.111	.064	.021	.103	.060	.019	
2.0	.130	.071	.022	.125	.069	.021	.117	.065	.020	.110	.061	.019	.103	.058	.018	
3.0	.124	.066	.020	.120	.064	.019	.113	.061	.019	.107	.058	.018	.101	.056	.017	
4.0	.118	.061	.018	.115	.060	.018	.109	.058	.017	.103	.055	.017	.098	.053	.016	
5.0	.113	.057	.017	.110	.056	.016	.105	.055	.016	.100	.053	.016	.095	.051	.015	
6.0	.108	.054	.015	.105	.053	.015	.101	.052	.015	.096	.050	.015	.092	.049	.014	
7.0	.103	.051	.014	.101	.050	.014	.097	.049	.014	.093	.048	.014	.090	.047	.014	
8.0	.099	.048	.014	.097	.048	.013	.093	.047	.013	.090	.046	.013	.087	.044	.013	
9.0	.095	.046	.013	.093	.045	.013	.090	.044	.013	.087	.044	.012	.084	.043	.012	
10.0	.091	.044	.012	.090	.043	.012	.087	.042	.012	.084	.042	.012	.081	.041	.012	

pcc	80%			70%			50%			30%			10%			0
pw	50%	30%	10%	50%	30%	10%	50%	30%	10%	50%	30%	10%	50%	30%	10%	0
pfc	20%			20%			20%			20%			20%			0
RCR	RCR:Room Cavity Ratio			Ceiling Cavity Exitance Coefficients(CCEC)												
0.0	.148	.148	.148	.126	.126	.126	.086	.086	.086	.049	.049	.049	.016	.016	.016	
1.0	.133	.122	.112	.113	.105	.097	.078	.072	.067	.045	.042	.039	.014	.013	.013	
2.0	.121	.103	.088	.103	.088	.076	.071	.061	.053	.041	.036	.031	.013	.012	.010	
3.0	.111	.088	.070	.095	.076	.060	.065	.053	.042	.038	.031	.025	.012	.010	.008	
4.0	.103	.077	.056	.088	.066	.049	.061	.046	.035	.035	.027	.020	.011	.009	.007	
5.0	.096	.068	.046	.083	.059	.040	.057	.041	.028	.033	.024	.017	.011	.008	.006	
6.0	.091	.060	.039	.078	.052	.034	.054	.037	.024	.031	.022	.014	.010	.007	.005	
7.0	.086	.055	.033	.074	.047	.028	.051	.033	.020	.030	.020	.012	.010	.006	.004	
8.0	.081	.050	.028	.070	.043	.024	.048	.030	.017	.028	.018	.010	.009	.006	.003	
9.0	.078	.046	.024	.067	.040	.021	.046	.028	.015	.027	.016	.009	.009	.005	.003	
10.0	.074	.042	.021	.064	.037	.019	.044	.026	.013	.026	.015	.008	.008	.005	.003	

C Range: 0 - 360DEG
C Interval: 30.0DEG
Test Speed: HIGH
Temperature:25.3℃
Operators:zoe
Test Date:2024-12-18

γ Range: 0 - 180DEG
γ Interval: 1.0DEG
Test System:EVERFINE GO-SPEX500_V1 SYSTEM V2.00.461
Humidity:65.0%
Test Distance:3.160m [K=1.0000]
Remarks: LAMP:BXRH-30G60T0-C-83 Ra:90
LENS:PM-1117C 50R
NOT DRIVER:DC 48V
30minutes warm-up

UGR(Unified Glare Rating) Table

Test:U:47.997V I:0.1340A P:6.4316W PF:1.0000 Freq:49.99Hz Lamp Flux:712.09x1 lm										
NAME: OZ48-CT-28					TYPE:			WEIGHT:		
SPEC.: 3000K					DIM.:			SERIAL No.: 2412181480		
MFR.: RISE					SUR.: 0.000346185m2			Shielding Angle:		
ceiling/cavity	0.7	0.7	0.5	0.5	0.3	0.7	0.7	0.5	0.5	0.3
walls	0.5	0.3	0.5	0.3	0.3	0.5	0.3	0.5	0.3	0.3
working plane	0.2	0.2	0.2	0.2	0.2	0.2	0.2	0.2	0.2	0.2
Room dimensions	Viewed crosswise					Viewed endwise				
x = 2H y = 2H	27.2	28.2	27.4	28.3	28.5	26.8	27.8	27.0	27.9	28.1
3H	27.0	27.9	27.3	28.1	28.3	26.6	27.5	26.9	27.7	27.9
4H	27.0	27.8	27.2	28.0	28.2	26.6	27.4	26.8	27.6	27.8
6H	26.9	27.6	27.2	27.9	28.1	26.5	27.2	26.8	27.5	27.7
8H	26.8	27.5	27.1	27.8	28.1	26.4	27.1	26.7	27.4	27.7
12H	26.8	27.5	27.1	27.7	28.0	26.4	27.1	26.7	27.3	27.6
4H 2H	27.0	27.8	27.2	28.0	28.2	26.6	27.4	26.8	27.6	27.8
3H	26.8	27.5	27.1	27.7	28.0	26.4	27.1	26.7	27.3	27.6
4H	26.7	27.3	27.0	27.6	27.9	26.3	26.9	26.6	27.2	27.5
6H	26.6	27.1	27.0	27.5	27.8	26.2	26.7	26.6	27.1	27.4
8H	26.5	27.0	26.9	27.4	27.8	26.1	26.6	26.5	27.0	27.4
12H	26.5	27.0	26.9	27.3	27.7	26.1	26.6	26.5	26.9	27.3
8H 4H	26.5	27.0	26.9	27.4	27.8	26.1	26.6	26.5	27.0	27.4
6H	26.4	26.9	26.9	27.2	27.7	26.0	26.5	26.5	26.8	27.3
8H	26.4	26.8	26.8	27.2	27.6	26.0	26.3	26.4	26.8	27.2
12H	26.3	26.6	26.8	27.1	27.6	25.9	26.2	26.4	26.7	27.2
12H 4H	26.5	27.0	26.9	27.3	27.7	26.1	26.6	26.5	26.9	27.3
6H	26.4	26.8	26.8	27.2	27.6	26.0	26.3	26.4	26.8	27.2
8H	26.3	26.6	26.8	27.1	27.6	25.9	26.2	26.4	26.7	27.2
Variations with the observer position at spacings(CIE Pub.117):										
S = 1.0H	+ 3.4 / -18.6					+ 3.4 / -17.1				
1.5H	+ 5.6 / -13.5					+ 5.5 / -12.9				
2.0H	+ 6.8 / -21.3					+ 7.0 / -21.2				

CIE Pub.117, 712.1 lm Total Lamp Luminous Flux Correct (8log(F/F0) = -1.2)
Area: 0.000346185 m2

C Range: 0 - 360DEG
C Interval: 30.0DEG
Test Speed: HIGH
Temperature:25.3℃
Operators:zoe
Test Date:2024-12-18

γ Range: 0 - 180DEG
γ Interval: 1.0DEG
Test System:EVERFINE GO-SPEX500_V1 SYSTEM V2.00.461
Humidity:65.0%
Test Distance:3.160m [K=1.0000]
Remarks: LAMP:BXRH-30G60T0-C-83 Ra:90
LENS:PM-1117C 50R
NOT DRIVER:DC 48V
30minutes warm-up

UTILIZATION FACTORS TABLE

Test:U:47.997V I:0.1340A P:6.4316W PF:1.0000 Freq:49.99Hz Lamp Flux:712.09x1 lm		
NAME: OZ48-CT-28	TYPE:	WEIGHT:
SPEC.: 3000K	DIM.:	SERIAL No.: 2412181480
MFR.: RISE	SUR.: 0.000346185m2	Shielding Angle:

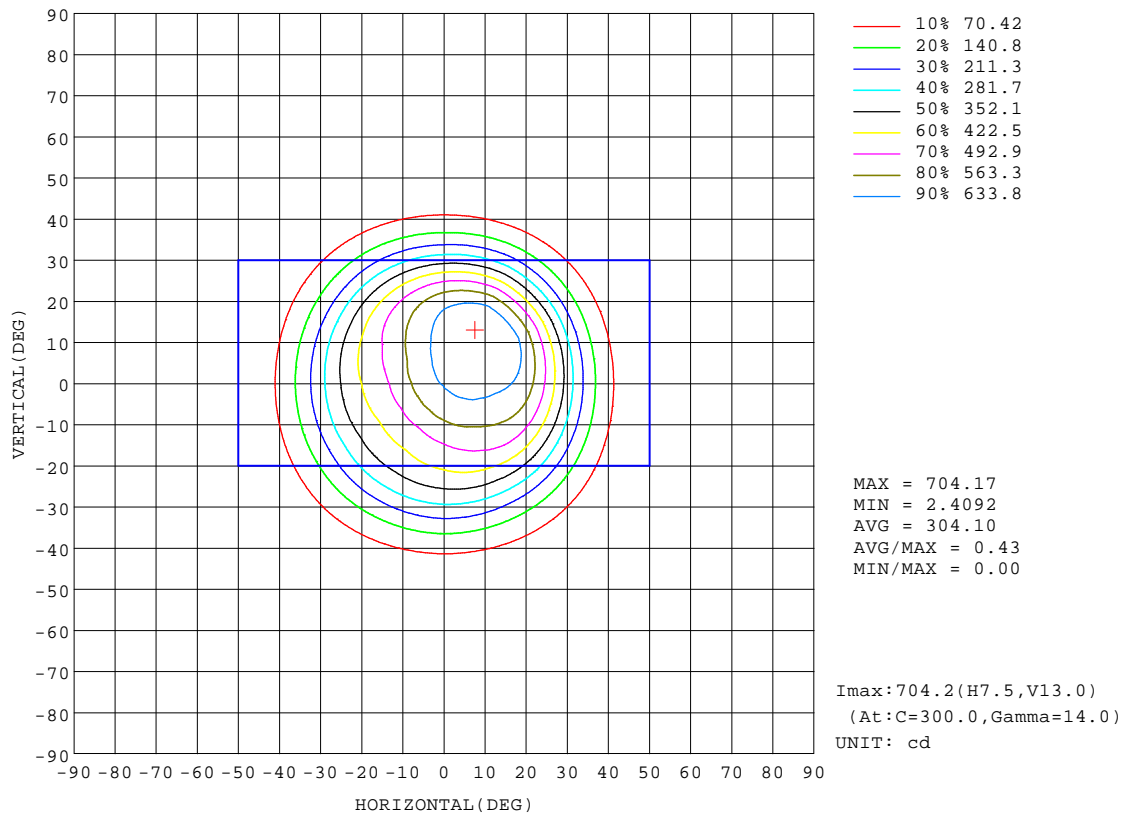
REFLECTANCE										
Ceiling	0.8	0.8	0.8	0.7	0.7	0.7	0.5	0.5	0.5	0
Walls	0.7	0.5	0.3	0.7	0.5	0.3	0.7	0.5	0.3	0
Working plane	0.2	0.2	0.2	0.2	0.2	0.2	0.2	0.2	0.2	0
ROOM INDEX	UTILIZATION FACTORS(PERCENT) $k(RI) \times RCR = 5$									
k = 0.60	68	63	60	67	63	60	67	63	60	57
0.80	74	69	66	73	69	66	72	68	66	63
1.00	77	73	70	77	73	70	75	72	70	67
1.25	80	76	74	80	76	73	78	75	73	70
1.50	82	79	76	81	78	76	80	77	75	72
2.00	84	81	79	83	80	78	81	79	77	73
2.50	86	83	81	84	82	80	82	80	78	74
3.00	87	84	82	85	83	81	83	81	80	75
4.00	88	86	85	87	85	84	84	83	81	76
5.00	89	88	86	88	86	85	85	84	83	77
ROOM INDEX	UF(total)									Direct
According to DIN EN 13032-2 2004			Suspended					SHRNOM = 1.25		

C Range: 0 - 360DEG
C Interval: 30.0DEG
Test Speed: HIGH
Temperature:25.3℃
Operators:zoe
Test Date:2024-12-18

γ Range: 0 - 180DEG
γ Interval: 1.0DEG
Test System:EVERFINE GO-SPEX500_V1 SYSTEM V2.00.461
Humidity:65.0%
Test Distance:3.160m [K=1.0000]
Remarks: LAMP:BXRH-30G60T0-C-83 Ra:90
LENS:PM-1117C 50R
NOT DRIVER:DC 48V
30minutes warm-up

ISOCANDELA DIAGRAM

Test:U:47.997V I:0.1340A P:6.4316W PF:1.0000 Freq:49.99Hz Lamp Flux:712.09x1 lm		
NAME: OZ48-CT-28	TYPE:	WEIGHT:
SPEC.: 3000K	DIM.:	SERIAL No.: 2412181480
MFR.: RISE	SUR.: 0.000346185m2	Shielding Angle:

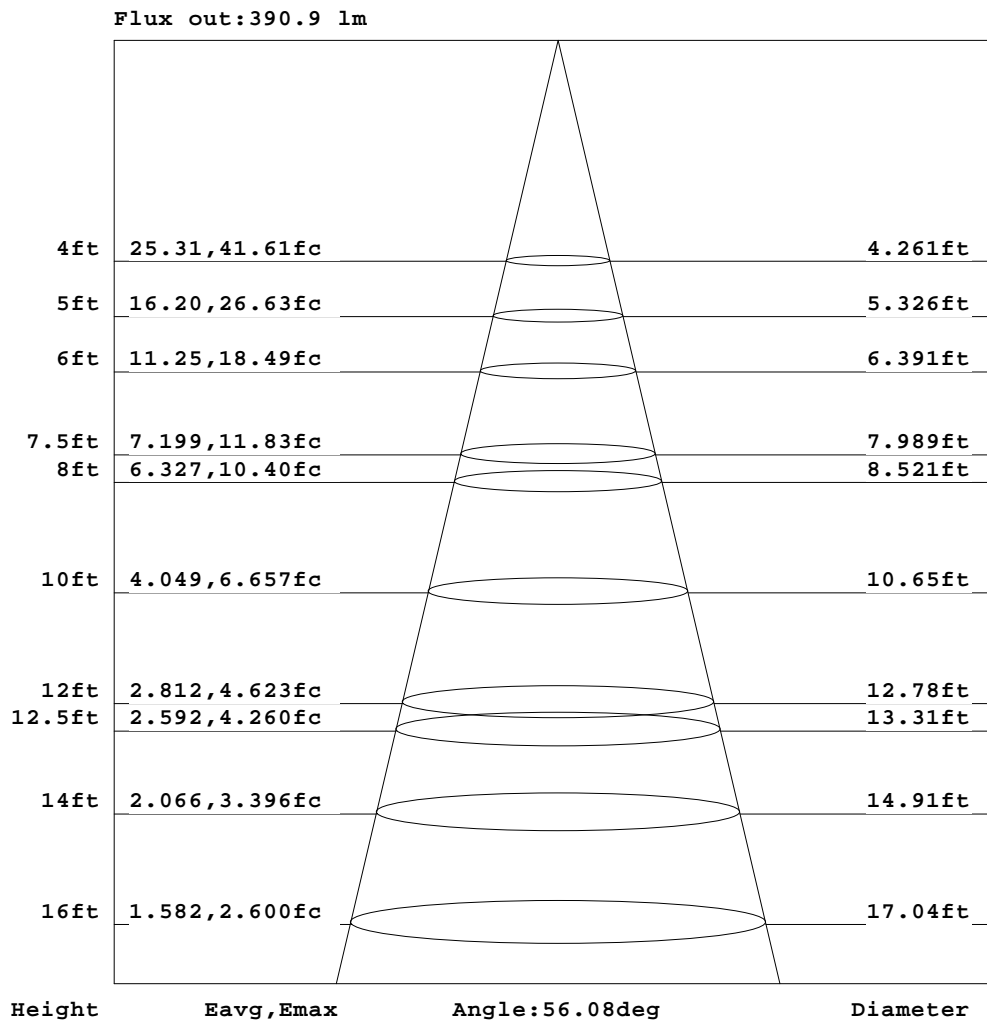


C Range: 0 - 360DEG
C Interval: 30.0DEG
Test Speed: HIGH
Temperature:25.3℃
Operators:zoe
Test Date:2024-12-18

γ Range: 0 - 180DEG
γ Interval: 1.0DEG
Test System:EVERFINE GO-SPEX500_V1 SYSTEM V2.00.461
Humidity:65.0%
Test Distance:3.160m [K=1.0000]
Remarks: LAMP:BXRH-30G60T0-C-83 Ra:90
LENS:PM-1117C 50R
NOT DRIVER:DC 48V
30minutes warm-up

AAI Figure

Test:U:47.997V I:0.1340A P:6.4316W PF:1.0000 Freq:49.99Hz Lamp Flux:712.09x1 lm		
NAME: OZ48-CT-28	TYPE:	WEIGHT:
SPEC.: 3000K	DIM.:	SERIAL No.: 2412181480
MFR.: RISE	SUR.: 0.000346185m2	Shielding Angle:



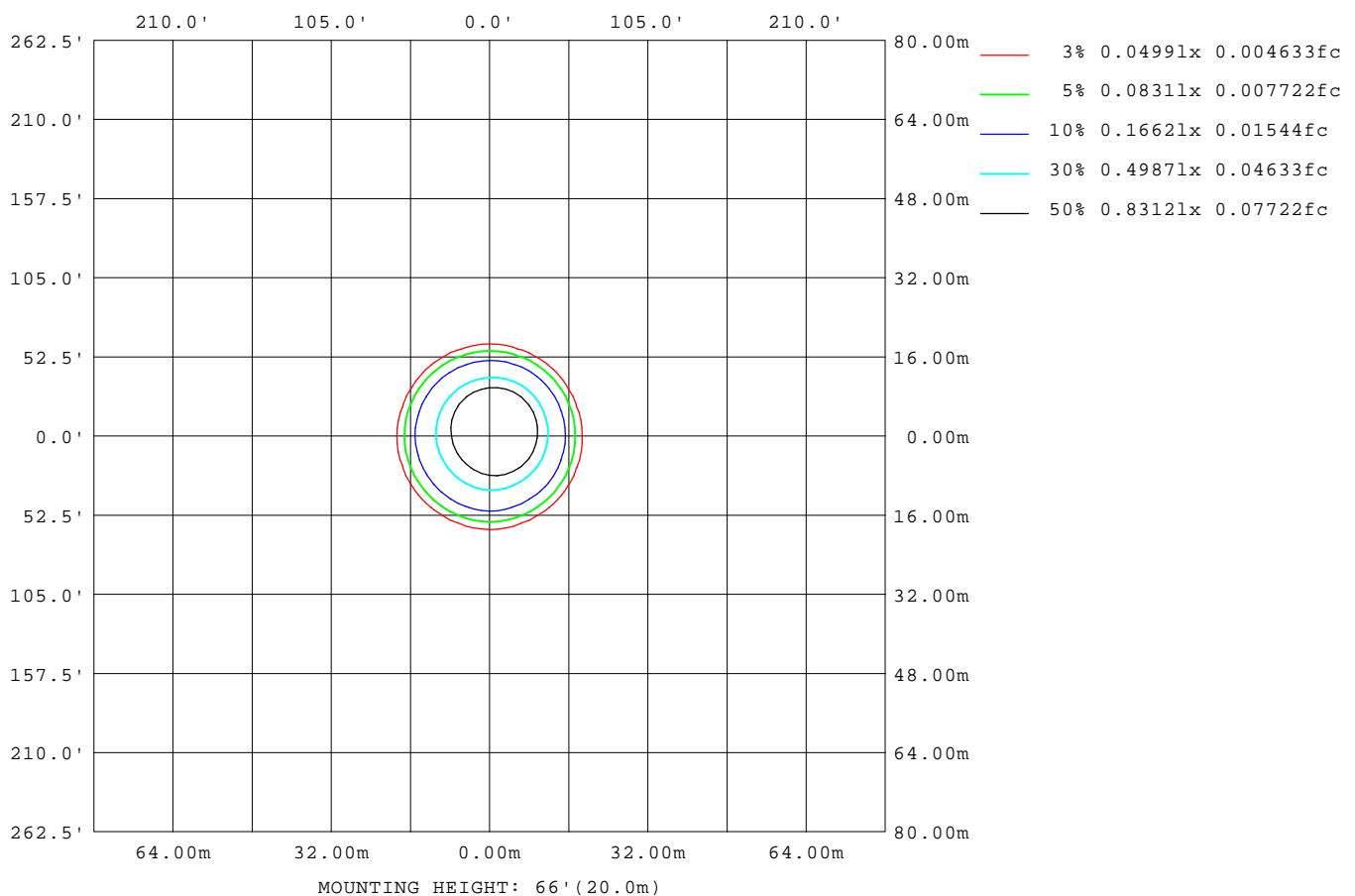
Note: The Curves indicate the illuminated area and the average illumination when the luminaire is at different distance.

C Range: 0 - 360DEG
C Interval: 30.0DEG
Test Speed: HIGH
Temperature: 25.3°C
Operators: zoe
Test Date: 2024-12-18

γ Range: 0 - 180DEG
γ Interval: 1.0DEG
Test System: EVERFINE GO-SPEX500_V1 SYSTEM V2.00.461
Humidity: 65.0%
Test Distance: 3.160m [K=1.0000]
Remarks: LAMP: BXRH-30G60T0-C-83 Ra: 90
LENS: PM-1117C 50R
NOT DRIVER: DC 48V
30minutes warm-up

ISOLUX DIAGRAM

Test:U:47.997V I:0.1340A P:6.4316W PF:1.0000 Freq:49.99Hz Lamp Flux:712.09x1 lm		
NAME: OZ48-CT-28	TYPE:	WEIGHT:
SPEC.: 3000K	DIM.:	SERIAL No.: 2412181480
MFR.: RISE	SUR.: 0.000346185m2	Shielding Angle:



C Range: 0 - 360DEG
C Interval: 30.0DEG
Test Speed: HIGH
Temperature: 25.3 °C
Operators: zoe
Test Date: 2024-12-18

γ Range: 0 - 180DEG
γ Interval: 1.0DEG
Test System: EVERFINE GO-SPEX500_V1 SYSTEM V2.00.461
Humidity: 65.0%
Test Distance: 3.160m [K=1.0000]
Remarks: LAMP: BXRH-30G60T0-C-83 Ra: 90
LENS: PM-1117C 50R
NOT DRIVER: DC 48V
30minutes warm-up

LED Avg.L Report

Test:U:47.997V I:0.1340A P:6.4316W PF:1.0000 Freq:49.99Hz Lamp Flux:712.09x1 lm		
NAME: OZ48-CT-28	TYPE:	WEIGHT:
SPEC.: 3000K	DIM.:	SERIAL No.: 2412181480
MFR.: RISE	SUR.: 0.000346185m2	Shielding Angle:

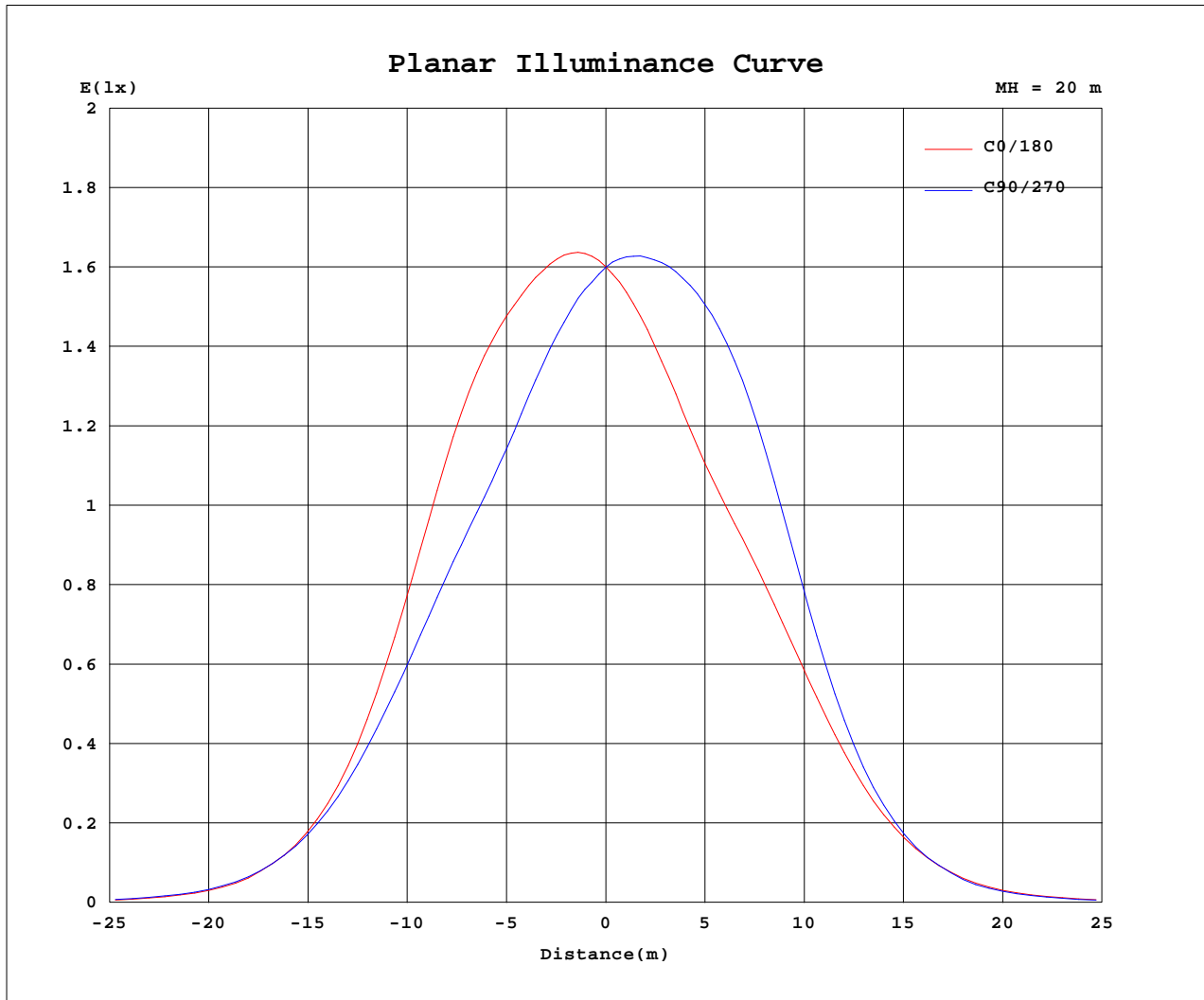
AvgL	cd/m2
L_0~180(65)av	1397
L_0~180(75)av	560
L_0~180(85)av	386
L_90~270(65)av	1419
L_90~270(75)av	595
L_90~270(85)av	441
L_45(65)av	1391
L_45(75)av	552
L_45(85)av	322

Standard: GB/T 29293-2012

C Range: 0 - 360DEG
C Interval: 30.0DEG
Test Speed: HIGH
Temperature:25.3℃
Operators:zoe
Test Date:2024-12-18

γ Range: 0 - 180DEG
γ Interval: 1.0DEG
Test System:EVERFINE GO-SPEX500_V1 SYSTEM V2.00.461
Humidity:65.0%
Test Distance:3.160m [K=1.0000]
Remarks: LAMP:BXRH-30G60T0-C-83 Ra:90
LENS:PM-1117C 50R
NOT DRIVER:DC 48V
30minutes warm-up

Planar Illuminance Curve



C Range: 0 - 360DEG
 C Interval: 30.0DEG
 Test Speed: HIGH
 Temperature: 25.3 °C
 Operators: zoe
 Test Date: 2024-12-18

γ Range: 0 - 180DEG
 γ Interval: 1.0DEG
 Test System: EVERFINE GO-SPEX500_V1 SYSTEM V2.00.461
 Humidity: 65.0%
 Test Distance: 3.160m [K=1.0000]
 Remarks: LAMP: BXRH-30G60T0-C-83 Ra: 90
 LENS: PM-1117C 50R
 NOT DRIVER: DC 48V
 30minutes warm-up



LUMINOUS DISTRIBUTION INTENSITY DATA

Test:U:47.997V I:0.1340A P:6.4316W PF:1.0000 Freq:49.99Hz Lamp Flux:712.09x1 lm		
NAME: OZ48-CT-28	TYPE:	WEIGHT:
SPEC.: 3000K	DIM.:	SERIAL No.: 2412181480
MFR.: RISE	SUR.: 0.000346185m2	Shielding Angle:

Table--1

UNIT: cd

C(DEG) γ (DEG)	0	30	60	90	120	150	180	210	240	270	300	330						
0	639	639	639	639	639	639	639	639	639	639	639	639						
5	661	642	620	603	592	590	596	613	636	658	673	673						
10	658	621	583	550	529	524	536	566	615	664	696	691						
15	642	585	532	489	461	456	473	514	582	655	706	696						
20	593	533	475	434	410	405	423	464	532	606	667	657						
25	478	432	387	362	344	338	353	385	435	486	538	530						
30	324	301	276	269	256	249	260	277	302	323	358	354						
35	182	176	166	168	159	155	161	166	174	178	196	192						
40	87.7	87.9	86.7	87.6	83.9	81.8	83.0	83.3	83.3	83.6	86.6	88.8						
45	34.8	37.3	37.0	37.7	35.9	35.6	35.2	33.4	33.2	32.1	33.1	33.8						
50	13.5	14.9	15.1	15.4	14.7	14.5	13.8	12.5	12.5	12.3	12.6	13.1						
55	3.52	4.02	4.31	4.37	4.11	3.98	3.60	3.16	3.23	3.22	3.30	3.36						
60	0.92	1.05	1.10	1.14	1.06	1.05	0.94	0.85	0.86	0.82	0.85	0.86						
65	0.20	0.21	0.22	0.23	0.22	0.23	0.21	0.20	0.19	0.19	0.18	0.18						
70	0.09	0.10	0.10	0.11	0.11	0.11	0.11	0.10	0.10	0.10	0.09	0.09						
75	0.04	0.04	0.05	0.06	0.06	0.06	0.06	0.05	0.05	0.05	0.05	0.04						
80	0.02	0.02	0.02	0.03	0.03	0.03	0.03	0.03	0.02	0.03	0.02	0.02						
85	0.01	0.01	0.01	0.01	0.01	0.01	0.01	0.01	0.01	0.01	0.01	0.01						
90	0.00	0.00	0.00	0.00	0.00	0.00	0.00	0.00	0.00	0.00	0.00	0.00						
95	0.00	0.00	0.00	0.00	0.00	0.00	0.00	0.00	0.00	0.00	0.00	0.00						
100	0.00	0.00	0.00	0.00	0.00	0.00	0.00	0.00	0.00	0.00	0.00	0.00						
105	0.00	0.00	0.00	0.00	0.00	0.00	0.00	0.00	0.00	0.00	0.00	0.00						
110	0.00	0.00	0.00	0.00	0.00	0.00	0.00	0.00	0.00	0.00	0.00	0.00						
115	0.00	0.00	0.00	0.00	0.00	0.00	0.00	0.00	0.00	0.00	0.00	0.00						
120	0.00	0.00	0.00	0.00	0.00	0.00	0.00	0.00	0.00	0.00	0.00	0.00						
125	0.00	0.00	0.00	0.00	0.00	0.00	0.00	0.00	0.00	0.00	0.00	0.00						
130	0.00	0.00	0.00	0.00	0.00	0.00	0.00	0.00	0.00	0.00	0.00	0.00						
135	0.00	0.00	0.00	0.00	0.00	0.00	0.00	0.00	0.00	0.00	0.00	0.00						
140	0.00	0.00	0.00	0.00	0.00	0.00	0.00	0.00	0.00	0.00	0.00	0.00						
145	0.00	0.00	0.00	0.00	0.00	0.00	0.00	0.00	0.00	0.00	0.00	0.00						
150	0.00	0.00	0.00	0.00	0.00	0.00	0.00	0.00	0.00	0.00	0.00	0.00						
155	0.00	0.00	0.00	0.00	0.00	0.00	0.00	0.00	0.00	0.00	0.00	0.00						
160	0.00	0.00	0.00	0.00	0.00	0.00	0.00	0.00	0.00	0.00	0.00	0.00						
165	0.00	0.00	0.00	0.00	0.00	0.00	0.00	0.00	0.00	0.00	0.00	0.00						
170	0.00	0.00	0.00	0.00	0.00	0.00	0.00	0.00	0.00	0.00	0.00	0.00						
175	0.00	0.00	0.00	0.00	0.00	0.00	0.00	0.00	0.00	0.00	0.00	0.00						
180	0.00	0.00	0.00	0.00	0.00	0.00	0.00	0.00	0.00	0.00	0.00	0.00						

C Range: 0 - 360DEG
C Interval: 30.0DEG
Test Speed: HIGH
Temperature:25.3℃
Operators:zoe
Test Date:2024-12-18

γ Range: 0 - 180DEG
γ Interval: 1.0DEG
Test System:EVERFINE GO-SPEX500_V1 SYSTEM V2.00.461
Humidity:65.0%
Test Distance:3.160m [K=1.0000]
Remarks: LAMP:BXRH-30G60T0-C-83 Ra:90
LENS:PM-1117C 50R
NOT DRIVER:DC 48V
30minutes warm-up